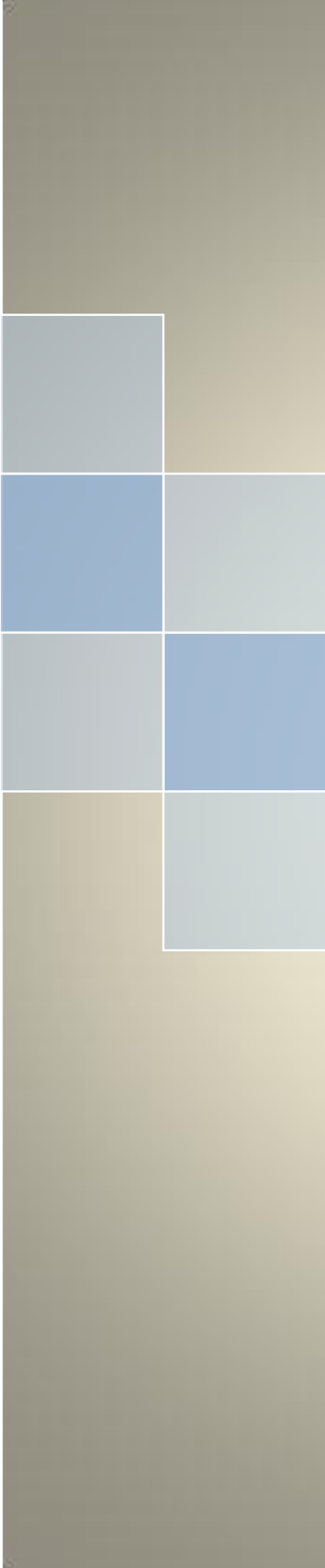
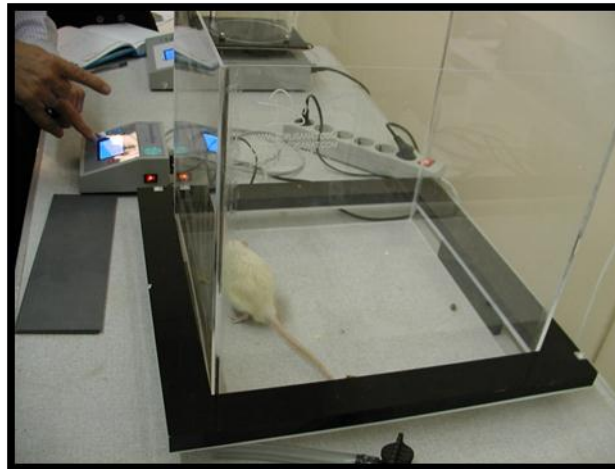


Borj Sanat azma

Physiology and pharmacology laboratory
instrument



Box Photobeam activity system



In order to obtain qualitative analysis of mouse or rat home cage activity with Photobeam Activity System. The subject's locomotor activity will be precisely tracked by a 5×5 photobeam configuration for mice or a 2×2 photobeam configuration for rats that reports breaks in real time, requiring no special calibration. Test up to 6 stations at a time and set it all up quickly with no technical knowledge required.

Features:

Designed to use for both locomotion and hole-board testing in rats and mice

Infra-red tracking system

Is able to track up to 6 animals simultaneously

Convenient, menu-based software

Real time reporting of activity

Reports counts and zone entries

Rearing option available



Borj SanatAzma

Specifications:

Box dimensions (HxWxD)	40cm X 40cm X 40 cm
Frame dimensions (HxWxD)	50cm X 50cm X 2 cm