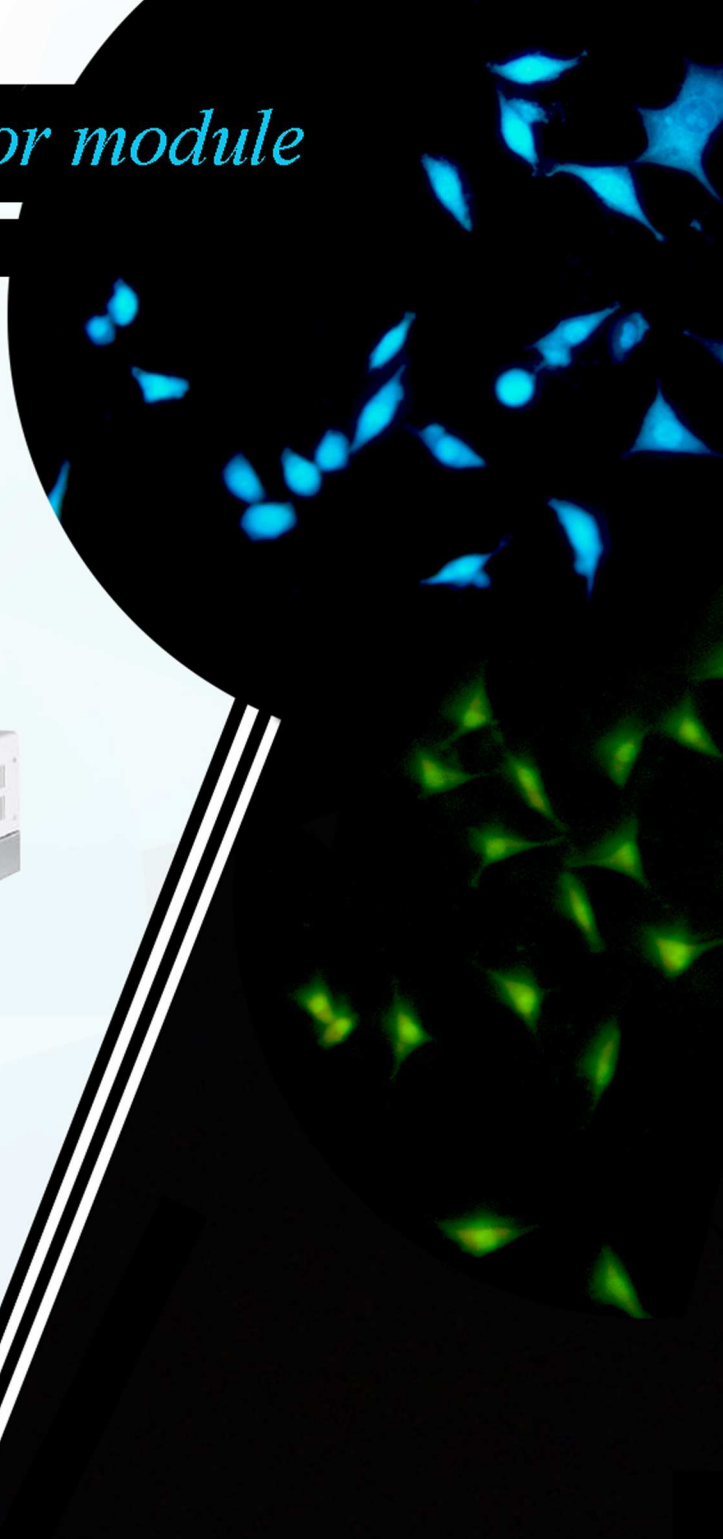
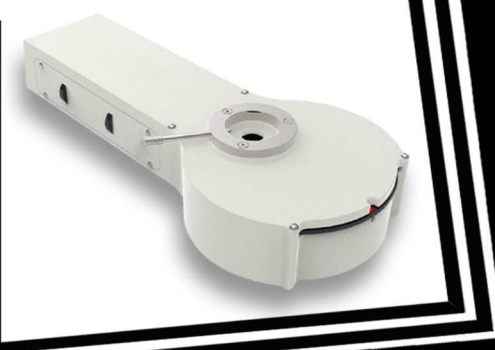


Epifluorescence illuminator module

Model: GA-EI02-





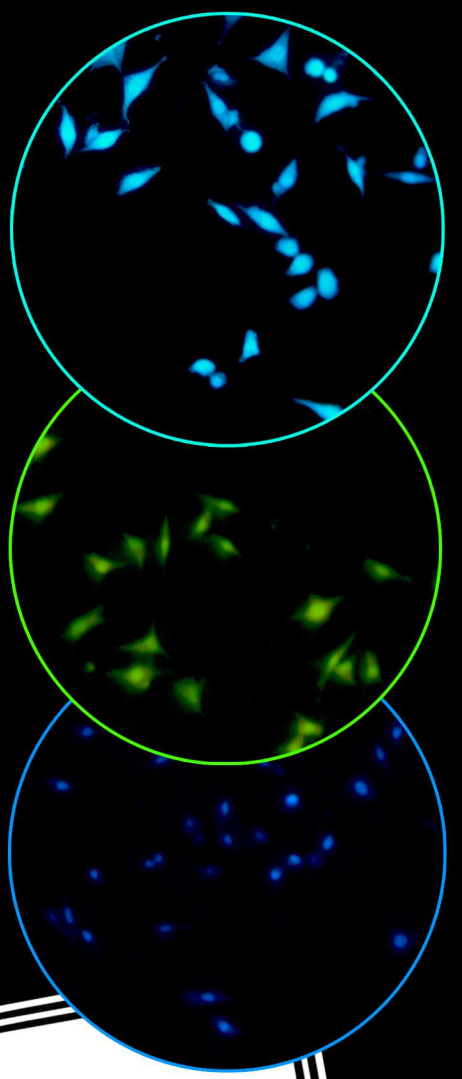
Specifications

Unit name	Epifluorescence illuminator module
Model	GA-EI 02
Description	Fluorescence module with 5-position filterwheel and LED light source
Fluorescence light source	Power LED and housing
Fluorescence lamp house	Adjustable
Filter sets (Brand)	4-position fluorescence filter sets
	Excitation Filter types: B, G, V, UV
	Customized filter sets available upon request
Wavelengths of filter sets	G: Ex 510-550 nm, Em 590LP (593/40 BP), DM 570
	B: Ex 460-490 nm, Em 520LP (474/27 BP), DM 500
	V: Ex 380-440 nm, Em 470LP (483/32 BP), DM 455
	UV: Ex 350-400 nm, Em 420LP (447/60 BP), DM 409
Filter sets switch type	User-changeable module (manual)
Diaphragm	Aperture and field diaphragms (manual)
Dimensions	420 mm × 180 mm × 63 mm
Fluorescence module weight	4 kg
Fluorescence module color	White



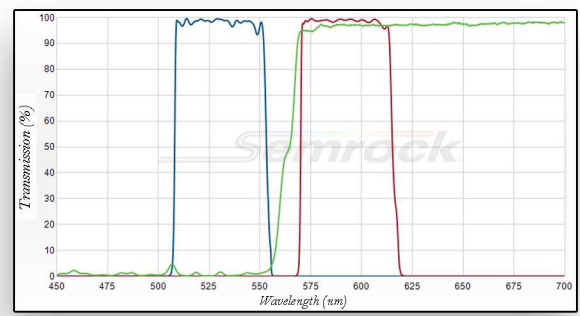
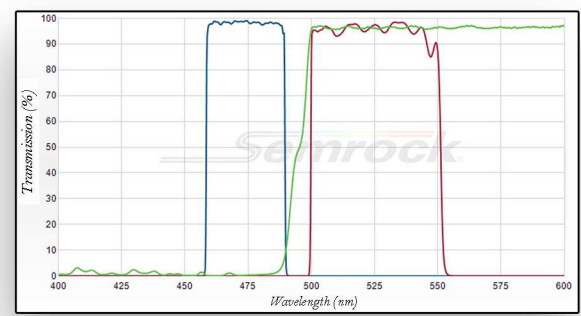
Filter sets

Captured images using epifluorescence illuminator module



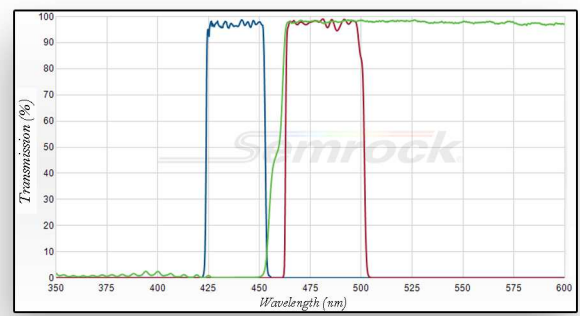
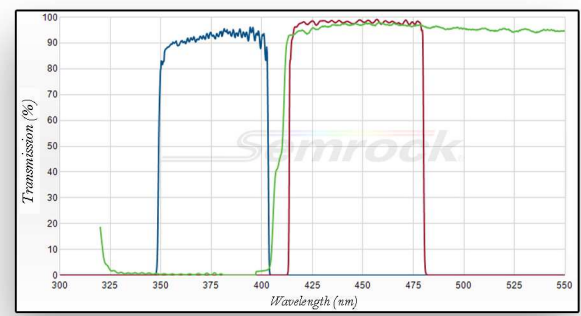
B (Blue)

G (Green)



UV (Ultraviolet)

V (Violet)



خیابان حبیب الہی، خیابان شہید قاسمی، خیابان گلستان
بن بست گل، پلاک ۴، زنگ ۵، طبقہ دوم

۶۶۰۳۳۱۸۴-۰۲۱

۱۴۵۹۹۷۳۷۶۱

www.geneafarin.com

Mail@geneafarin.com

