



Plasma Spectrometer



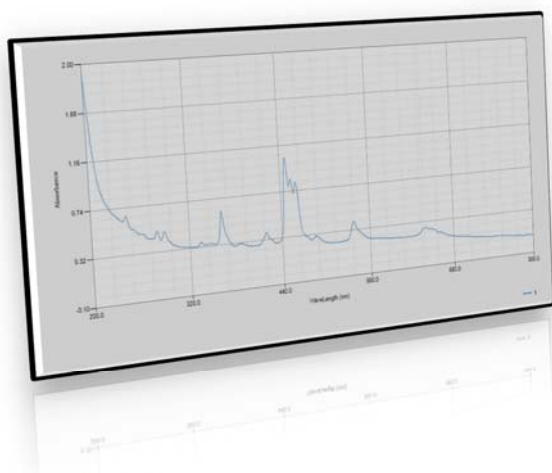
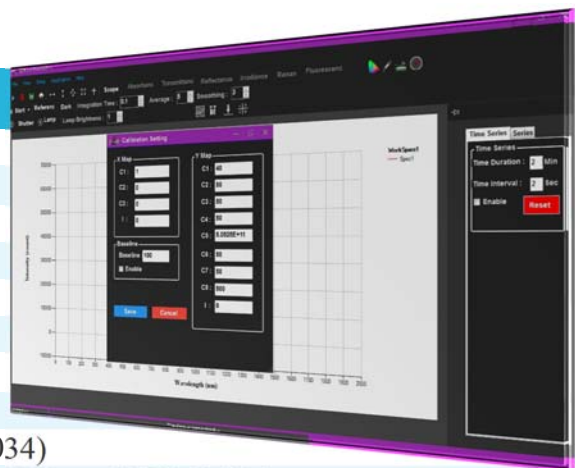
- Simultaneous obtained of all spectra
- Time Monitoring of spectra
- Integration time controlling using software
- Mathematical processing (Averaging, Sum, Smooth ...)

Plasma Spectrometer

Specifications:

Optical Specifications

Wavelength Range	200-800 nm
Resolution	< +1.0 nm
Scan Time	2-1000 ms
Typical Scan Time	0.1 s
Stray Light	< 0.03 %
Wavelength Accuracy	< ±0.1 nm
Photometric Stability	< 0.01 A/min at 0 A , 500 nm
Photometric Noise	< 0.01 A 80 scan at 0 A , 500 nm
Wavelength Reproducibility	< ±0.02 nm for 10 scans (NIST 2034)
Photometric Accuracy	< ± 0.01 A at 440.0 465.0 590.0 635.0 nm (NIST 930e)
Baseline Flatness	< 0.01 A 0.5 second blank, 0.5 second scan at 0 A , 500 nm
Detector	2000 Multichannel



Physical Specifications

Communication	USB2
Windows	7 , 8 , 10
Software	Spectroscopy Station
Weight	3 Kg
HxWxD	13x22x27 cm
Power	USB

Applications:

