

Color Spectrophotometer



- Simultaneous obtained of all spectra
- Color Scale RGB CIE (Lab – xyz – Lch)
- Real Time Monitoring of spectra
- Integration time controlling using software
- Mathematical processing (Averaging, Sum, Smooth ...)

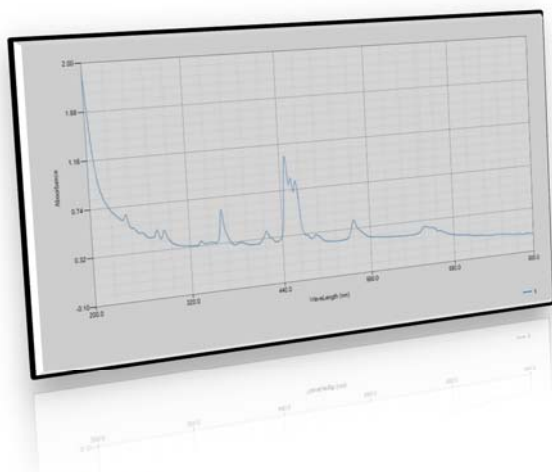
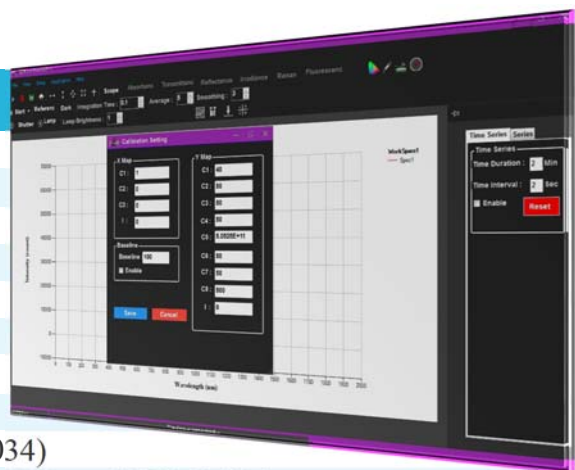
Color Spectrophotometer

SpecColor-Arn-20

Specifications:

Optical Specifications

Wavelength Range	380-800 nm (380-1100 nm)
Resolution	< +0.7 nm
Scan Time	2-1000 ms
Typical Scan Time	0.1 s
Stray Light	< 0.02 %
Wavelength Accuracy	< ±0.1 nm
Photometric Stability	< 0.005 A/min at 0 A , 500 nm
Photometric Noise	< 0.005 A 80 scan at 0 A, 500 nm
Wavelength Reproducibility	< ±0.02 nm for 10 scans (NIST 2034)
Photometric Accuracy	< ± 0.01 A at 440.0 465.0 590.0 635.0 nm (NIST 930e)
Baseline Flatness	< 0.01 A 0.5 second blank, 0.5 second scan at 0 A , 500 nm
Light Source	Halogen/Tungsten Lamp
Detector	1000 Multichannel



Physical Specifications

Communication	USB2
Windows	7 , 8 , 10
Software	Spectroscopy Station
Weight	10 Kg
HxWxD	13x33x50 cm
Power	220V AC 50/60 Hz

Applications:

