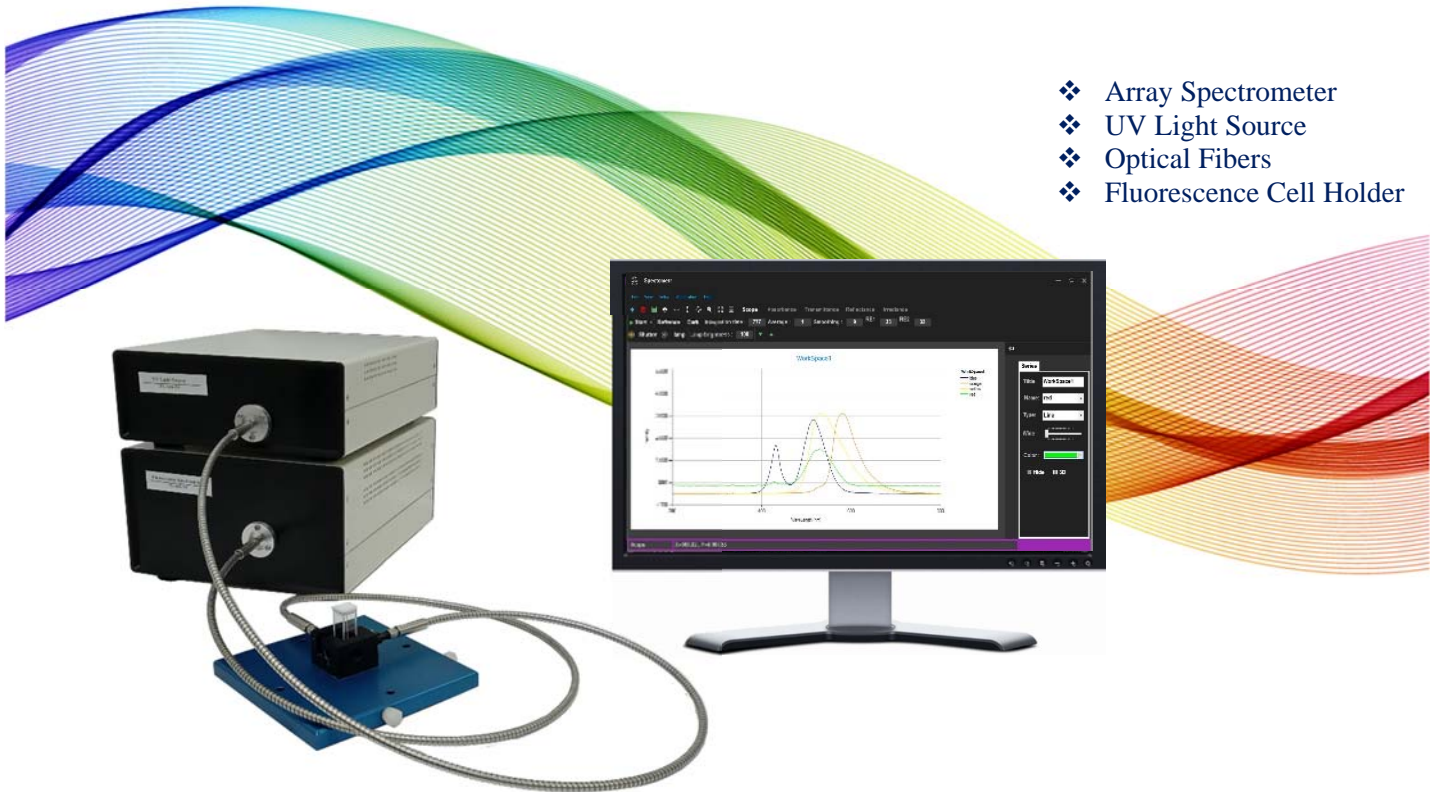


## Fluorescence + Absorbance Spectrometer Fiber Optic



- ❖ Array Spectrometer
- ❖ UV Light Source
- ❖ Optical Fibers
- ❖ Fluorescence Cell Holder

- Simultaneous obtained of all spectra
- Time Monitoring of spectra
- Integration time controlling using software
- Mathematical processing (Averaging, Sum, Smooth ...)

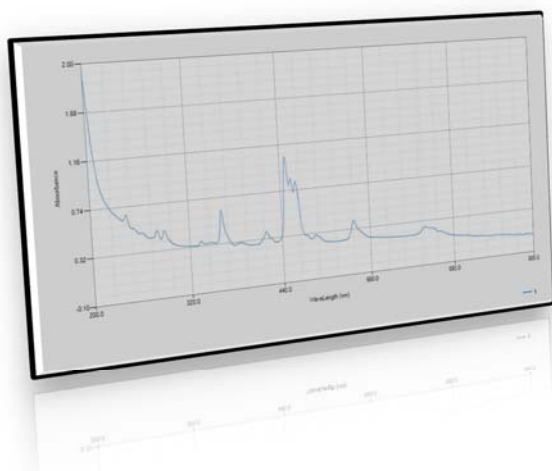
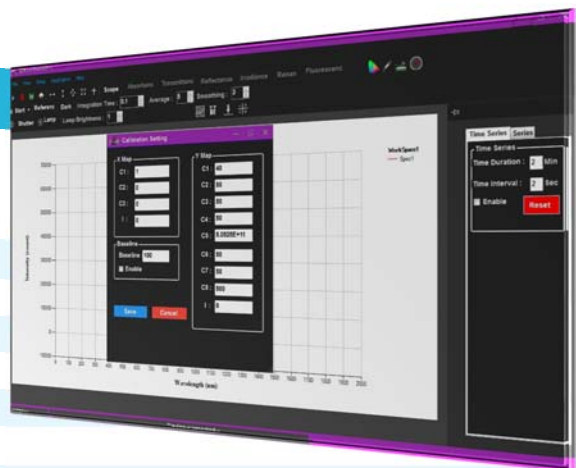
# Fluorescence + Absorbance Spectrometer

FL+Abs-Arn-20

## Specifications:

### Optical Specifications

|                            |  |            |     |
|----------------------------|--|------------|-----|
| Wavelength Range           | 250-800 nm   | Emission   | FL  |
| Wavelength Range           | 200-550 nm   | Fix Excite | FL  |
| Wavelength Range           | 200-800 nm   |            | Abs |
| Resolution                 | < +1.0 nm  |            |     |
| Scan Time                  | 2-1000 ms  |            |     |
| Typical Scan Time          | 0.1 s  |            |     |
| Stray Light                | < 0.03 %   |            |     |
| Wavelength Accuracy        | < ±0.1 nm  |            |     |
| Photometric Stability      | < 0.01 A/min at 0 A , 500 nm                               |            |     |
| Photometric Noise          | < 0.01 A 80 scan at 0 A , 500 nm                           |            |     |
| Wavelength Reproducibility | < ±0.02 nm for 10 scans (NIST 2034)                        |            |     |
| Photometric Accuracy       | < ± 0.01 A at 440.0 465.0 590.0 635.0 nm (NIST 930e)       |            |     |
| Baseline Flatness          | < 0.01 A 0.5 second blank, 0.5 second scan at 0 A , 500 nm |            |     |
| Light Source               | Deuterium + Halogen/Tungsten Lamp                          |            |     |
| Detector                   | 2000 Multichannel  |            |     |



### Physical Specifications

|               |                      |
|---------------|----------------------|
| Communication | USB2                 |
| Windows       | 7 , 8 , 10           |
| Software      | Spectroscopy Station |
| Weight        | 6 Kg                 |
| HxWxD         | 22x22x28 cm          |
| Power         | 220V AC 50/60 Hz     |

## Applications:

