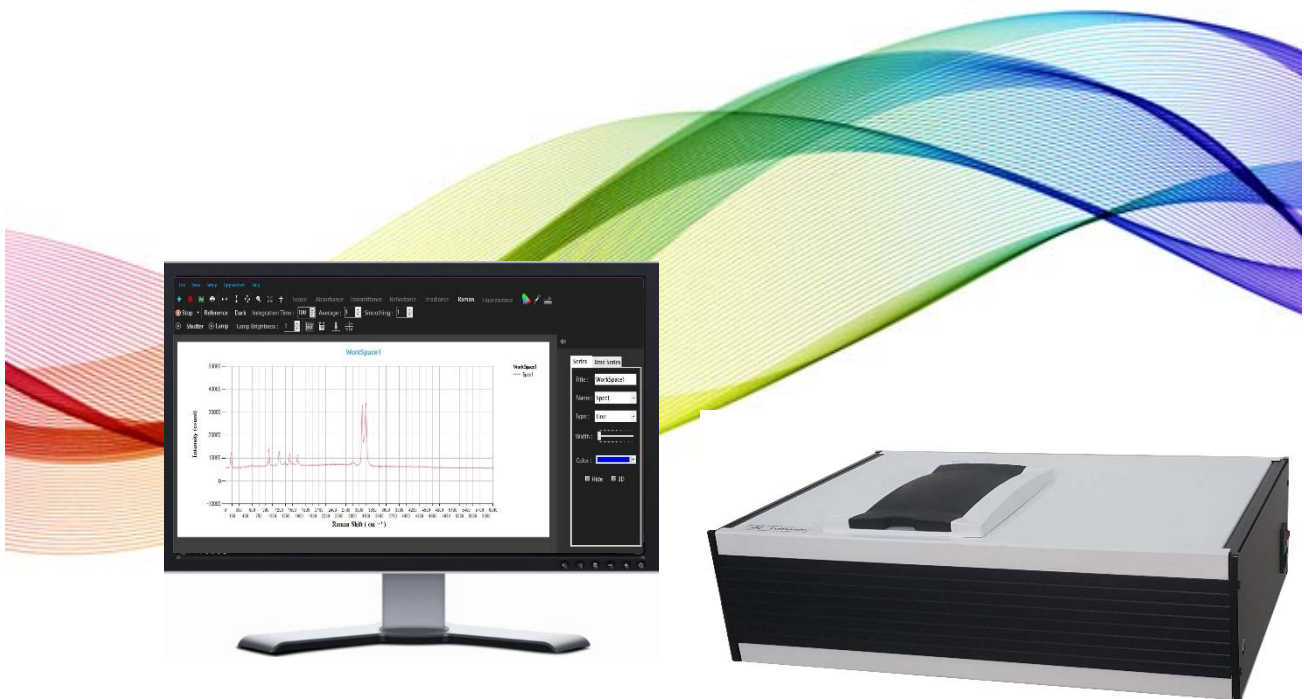




Raman Spectrophotometer



- Simultaneous obtained of all spectra
- Real Time Monitoring of spectra
- Integration time controlling using software
- Mathematical processing (Averaging, Sum, Smooth ...)

اسپکتروفتومتر رامان با آشکار ساز آرایه ای

Model: Spec-Ram-Arn-20

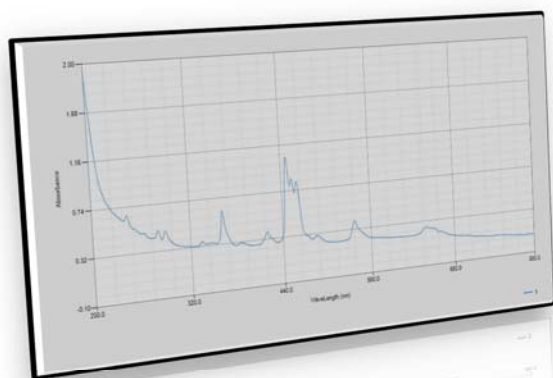
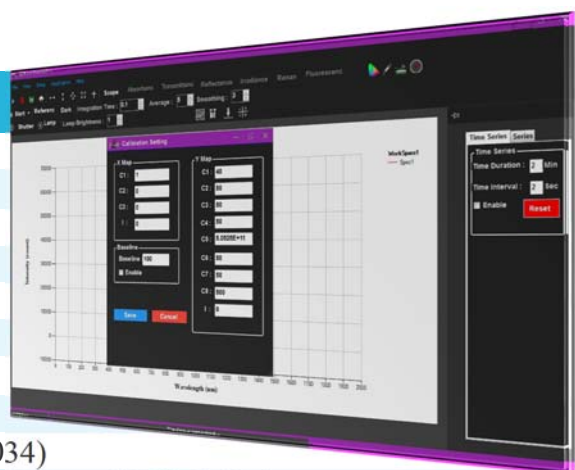
Raman Spectrophotometer

Spec-Ram-Arn-20

Specifications:

Optical Specifications

Wavelength Range	150-4500 cm^{-1}
Resolution	$< +20 \text{ cm}^{-1}$
Scan Time	2-1000 ms
Typical Scan Time	0.1 s
Stray Light	$< 0.03 \%$
Wavelength Accuracy	$< \pm 0.1 \text{ nm}$
Photometric Stability	$< 0.01 \text{ A/min}$ at 0 A , 500 nm
Photometric Noise	$< 0.01 \text{ A}$ 80 scan at 0 A , 500 nm
Wavelength Reproducibility	$< \pm 0.02 \text{ nm}$ for 10 scans (NIST 2034)
Photometric Accuracy	$< \pm 0.01 \text{ A}$ at 440.0 465.0 590.0 635.0 nm (NIST 930e)
Baseline Flatness	$< 0.01 \text{ A}$ 0.5 second blank, 0.5 second scan at 0 A , 500 nm
Light Source	Laser 532 nm 200 mW 10000 Hours 1%rms
Detector	2000 Multichannel



Physical Specifications

Communication	USB2
Windows	7 , 8 , 10
Software	Spectroscopy Station
Weight	10 Kg
HxWxD	13x33x50 cm
Power	220V AC 50/60 Hz

Applications:

