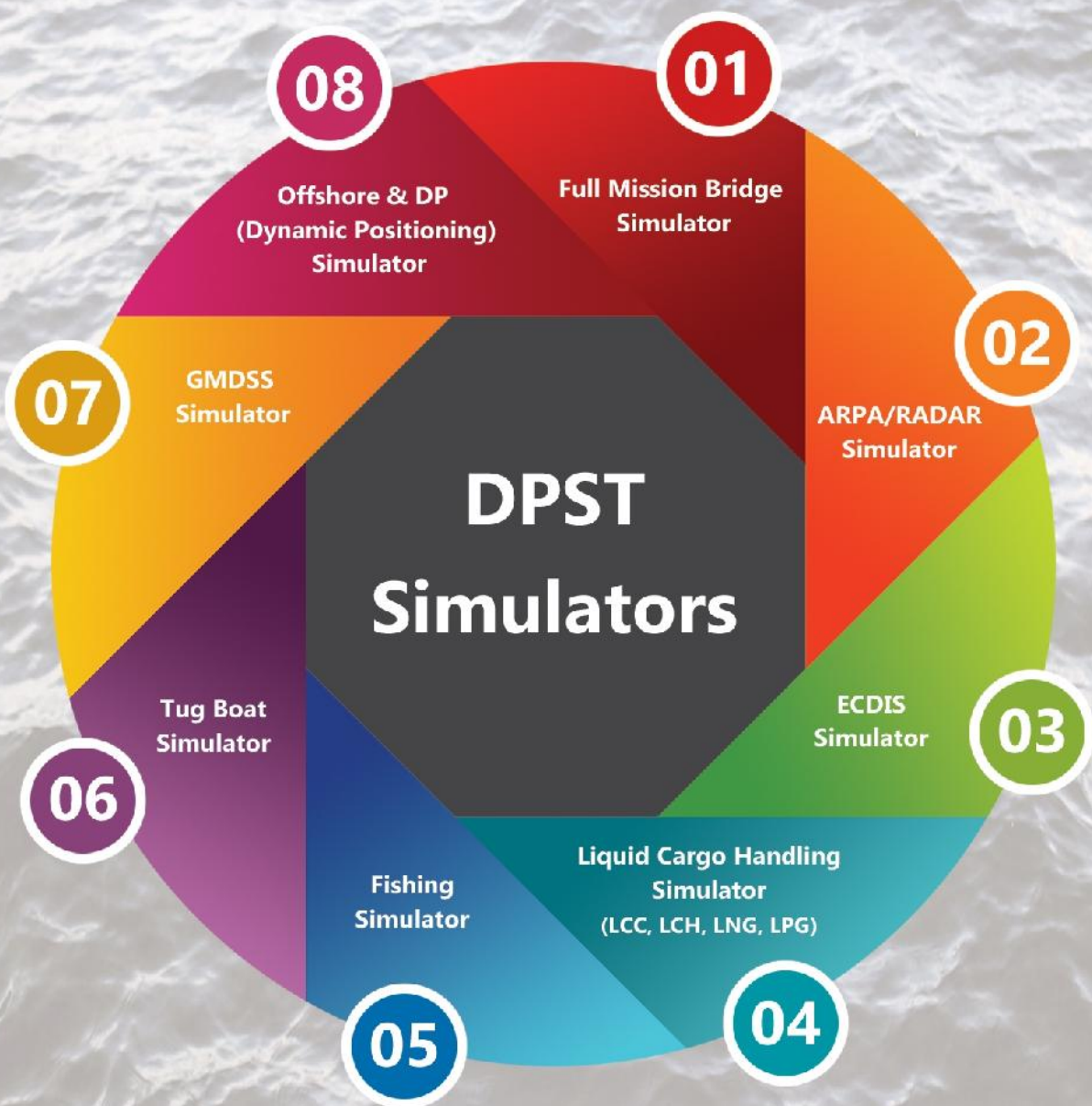


شرکت دانش بنیان

دریا پردازشگران سورین طبرستان (سهامی خاص)

تحت حمایت معاونت علمی فناوری ریاست جمهوری
مستقر در پارک علمی فناوری استان مازندران



TITAN-S2

V2.0



- ✓ **Instructor Room**
- ✓ **Main Bridge + Additional Bridge** (Optional)
- ✓ **Conning:** Pilot Card- Man Info- Instrument- Signals- Alarms- Moor- SAR
- ✓ **RADAR:** Nucleus- Furuno- Bridge Master
- ✓ **ECDIS:** Sensors (ARPA's, AIS, echo sounder, autopilot, NavTex) Head-Up/North-Up/Course-Up/True/Relative Motion
- ✓ **NAVAIDS:** GPS - UAIS - Loran - MFDF
- ✓ **GMDSS:** VHF&DSC- MF/HF&DSC- Radiotelex- Inmarsat- Navtex- Alarm Panel- Battery Charger- EPIRB- SART
- ✓ **Visualization:** 180 Degree
- ✓ **Ship control Module**

شرکت دانش بنیان دریا پردازشگران سورین طبرستان

تحت حمایت معاونت علمی فناوری ریاست جمهوری - مستقر در پارک علمی فناوری استان مازندران

TITAN-S1

V3.0



- ✓ **Instructor Room**
- ✓ **Main Bridge + Additional Bridge** (Optional)
- ✓ **Conning:** Pilot Card- Man Info- Instrument- Signals- Alarms- Moor- SAR
- ✓ **RADAR:** Nucleus- Furuno- Bridge Master
- ✓ **ECDIS:** Sensors (ARPA's, AIS, echo sounder, autopilot, NavTex) Head-Up/North-Up/Course-Up/True/Relative Motion
- ✓ **NAVAIDS:** GPS - UAIS - Loran - MFDF
- ✓ **GMDSS:** VHF&DSC- MF/HF&DSC- Radiotelex- Inmarsat- Navtex- Alarm Panel- Battery Charger- EPIRB- SART
- ✓ **Visualization of Main Bridge:** 270 Degree
- ✓ **Visualization of Additional Bridge:** 180 Degree
- ✓ **Debriefing Room**
- ✓ **Ship control Module**
- ✓ **Deck Helicopter:** Generic Control- Takeoff/Landing- Flight Indicator- Navigation Info- Radar- Chart

شرکت دانش بنیان دریا پردازشگران سورین طبرستان

تحت حمایت معاونت علمی فناوری ریاست جمهوری - مستقر در پارک علمی فناوری استان مازندران

TITAN-S3

V3.0



- ✓ **Instructor**
- ✓ **Additional Bridge** (Up to 12x Bridges Optional)
- ✓ **Conning:** Pilot Card- Man Info- Instrument- Signals- Alarms- Moor- SAR
- ✓ **RADAR:** Nucleus- Furuno- Bridge Master
- ✓ **ECDIS:** Sensors (ARPA's, AIS, echo sounder, autopilot, NavTex) Head-Up/North-Up/Course-Up/True/Relative Motion
- ✓ **Visualization**
- ✓ **Hardware** (ECDIS Professional Keyboard)

شرکت دانش بنیان دریا پردازشگران سورین طبرستان

تحت حمایت معاونت علمی فناوری ریاست جمهوری - مستقر در پارک علمی فناوری استان مازندران

TITAN-S4

V2.0

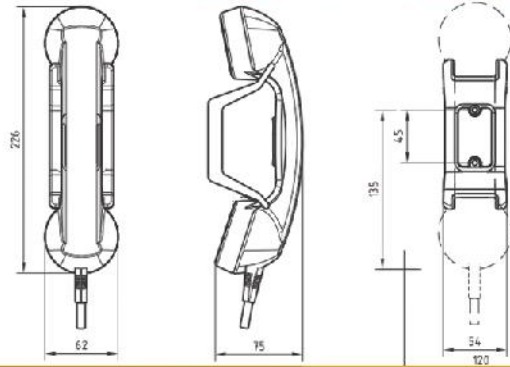


- ✓ **Instructor**
- ✓ **Additional Bridge** (Up to 12x Bridges Optional)
- ✓ **Conning:** Pilot Card- Man Info- Instrument- Signals- Alarms- Moor- SAR
- ✓ **RADAR:** Nucleus- Furuno- Bridge Master
- ✓ **ECDIS:** Sensors (ARPA's, AIS, echo sounder, autopilot, NavTex) Head-Up/North-Up/Course-Up/True/Relative Motion
- ✓ **Visualization**
- ✓ **Hardware** (ECDIS Professional Keyboard - 3 Buttons Trackball - Wheel - Telegraph - STEERING Panel)

شرکت دانش بنیان دریا پردازشگران سورین طبرستان

تحت حمایت معاونت علمی فناوری ریاست جمهوری - مستقر در پارک علمی فناوری استان مازندران

TITAN-G V2.0



- ✓ **Instructor**
- ✓ **Additional Bridge** (Up to 12x Bridges Optional)
- ✓ **GMDSS**: VHF&DSC- MF/HF&DSC- Radiotelex- Inmarsat- Navtex- Alarm Panel- Battery Charger- EPIRB- SART
- ✓ **Hardware** (Communication Box - Handset - Compatible Sound Card)

شرکت دانش بنیان دریا پردازشگران سورین طبرستان

تحت حمایت معاونت علمی فناوری ریاست جمهوری - مستقر در پارک علمی فناوری استان مازندران

TITAN-D

V2.0



- ✓ **Instructor Room**
- ✓ **Main Bridge + Additional Bridge** (Optional)
- ✓ **Conning:** Pilot Card- Man Info- Instrument- Signals- Alarms- Moor- SAR
- ✓ **RADAR:** Nucleus- Furuno- Bridge Master
- ✓ **GMDSS:** VHF&DSC- MF/HF&DSC- Radiotelex- Inmarsat- Navtex- Alarm Panel- Battery Charger- EPIRB- SART
- ✓ **Visualization**
- ✓ **Debriefing Room**
- ✓ **Ship control Module**
- ✓ **Type: DP1 - DP2 - DP3**

This configuration is designed for Sea Time reduction courses , task rehearsals and resource management training. It includes both extensive horizontal and vertical visual view, physical controls for all thrusters and rudders, and all relevant navigational equipment such as ARPA/Radar, ECDIS and communications. It also contains operator interfaces for the Positioning Reference Systems and a Joystick Backup System. The bridge can be designed as a forward and/or aft looking bridge to accommodate the intended operations.

شرکت دانش بنیان دریا پردازشگران سورین طبرستان

تحت حمایت معاونت علمی فناوری ریاست جمهوری - مستقر در پارک علمی فناوری استان مازندران

شرکت دانش بنیان

دریا پردازشگران سورین طبرستان (سهامی خاص)

تحت حمایت معاونت علمی فناوری ریاست جمهوری
مستقر در پارک علمی فناوری استان مازندران



انواع شناورهای شبیه سازی شده شامل ۱۵۲ مدل

BARGE LIST	SHIP LIST		
Big Box Barge	AOR-FORT VICTORIA class	Fishery training ship 1	Passenger car ferry
Big Box Barge bl	Bulk carrier 1	Fishery training ship 2	Passenger cruise ship 1
Lead Rake Barge	Bulk carrier 1 bl	Fishery training ship 3	Passenger cruise ship 2
Lead Rake Barge bl	Bulk carrier 2	Fishery training ship 4	Passenger cruise ship 3
Little Box Barge	Bulk carrier 2 bl	Fishery training ship 5	Patrol boat
Little Box Barge bl	Bulk carrier 3 bl	Frigate F123	Rescue vessel
Oil barge 255 series	Bulk carrier 4	Frigate F124	Research ship
Oil barge 255 series bl	Car carrier 1	Frigate Oliver Perry class	Rigid inflatable boat
Oil barge 450 series	Car carrier 2	Frigate Udaloy class	River sea ship 1
Oil barge 450 series bl	Car carrier 3 bl	High Speed Ferry 1	River sea ship 2
RO-RO barge 730 series	Car carrier 4	Ice breaker 1	River sea ship 3
RO-RO barge 730 series bl	Car carrier 5	Ice tanker 1	River sea ship 4
	Car carrier 6	IMT 992	River sea ship 5
TUG LIST	Chemical tanker	Life boat 1	River sea ship 6
Azimuth tractor tug 1	Chemical tanker 1	Life boat 2	River sea ship 7
Conventional tug	Coast guard boat	Life boat 3	River sea ship 8
Conventional twin screw tug 1	Coast guard ship Sprut class	Life boat 4	Ro-Ro Passenger Ferry
Conventional twin screw tug 1C	Coastal tanker	Life boat 5	Ro-Ro Passenger Ferry 1
Conventional twin screw tug 2	Combatboat	LNG 1	Ro-Ro Passenger Ferry 2
Conventional twin screw tug 2C	Container ship 1	LNG 1 bl	Ro-Ro Passenger Ferry 3
Conventional twin screw tug 3	Container ship 2	LNG 2	Ro-Ro Passenger Ferry 4
Conventional twin screw tug 4	Container ship 2 bl	LNG 4	Ro-Ro Passenger Ferry 5
Conventional twin screw tug 5	Container ship 3	LO RO ship	Ro-Ro Passenger Ferry 6
Ice tug 1	Container ship 4	Lots boat	Ro-Ro Passenger Ferry 7
Integrated Tug Barge 450	Container ship 5	LPG 1	Seiner
Twin screw PushBoat	Container ship 9	MCM ship MJ 333	Shuttle tanker
Voith Schneider tug 1	Crude Oil Tanker 2	MCMV Hunt class	Stern trawler
Voith Schneider tug 2	CVS INVINCIBLE class	MCMV Sandown class	Supply ship EGV 702
Voith Schneider tug 3	DDGH T42 class	Mine hunter Mewa class	Support Ship T404
Z-drive tug 1	Destroyer	Motor yacht	Training ship
Z-drive tug 2	Destroyer Arleigh Burke class	Multirole support ship	Trawler
Submarine	Fast attack craft Mirazh class	Offshore Rescue Vessel	VLCC 1
SSBN Vanguard class	Fast attack craft Molniya class	Oil tanker	VLCC 1 bl
SSN TRAFALGAR class	Fast attack craft Sokzhoy class	Oil tanker 2	VLCC 2
OSV List	Fast attack craft Svetlyak class	Oil tanker 2 bl	VLCC 2 bl
OSV 1	Fast Ferry	Oil tanker 3	VLCC 3
OSV 1 DP	FFGH T22 class	Oil tanker bl	Voyager
OSV 2	FFGH T23 class	OPV River class	
OSV 2 DP	Fish boat	Fisher	
OSV 3			
OSV 3 DP			

شرکت دانش بنیان

دریا پردازشگران سورین طبرستان (سهامی خاص)

تحت حمایت معاونت علمی فناوری ریاست جمهوری
مستقر در پارک علمی فناوری استان مازندران



بنادر شبیه سازی شده موجود شامل ۹۶ ناحیه



Aberdeen	Glasgow and appr	Los Angeles	Pusan and appr-s
Abu Dhabi	Goteborg	Low-Svir Lock	Rauma
Arko	Grande Riviere	Malakka Strait	Ria de Vigo
Auckland	Hai Phong	Miami	Riga
Baltimore	Helsinki	Milford	San Francisco
Baltiysk	Hi Saki to Tuki Saki	Miyagi	Seattle and Tacoma
Bandar Abbas	Hitachinaka	Montego Bay	Shanghai
Bandar Imam Khomeyni	Hochimin	New Orleans	St.Petersburg
Belt	Hong Kong	New York and appr-s	St.Petersburg City
Bisan Seto	Honolulu	Nikolaev	Sullom Voe
Bosfor	Houston&Texas	Norfolk	Swedish WCoast c931
Da Nang	Huangpu	Ocho Rios	Swedish WCoast c932
Dabhol	Irako Strait	Okinawa	Swedish WCoast c933
Dardanelles	Irish Sea	Olya port	Swedish WCoast c934
Discovery Bay	Isinomaki Wan	Oresund	Sydney and appr-s
Dover Strait	Ivanovsky rapids	Osaka Bay	Szczecin and appr-s
Europort	Kanmon Kaikyō	Oxelosund	Tallinn and Muuga
Ferrol-Coruna	Kingston	Palma de Mallorca	Upper-Svir Lock
FW Mallsten-Moja	Kirkwall	Peterhead and appr-s	Uraga Suido
FW Stockholm-Sandon	Koshkinsky FW	Philadelphia	Ventspils
GB South Coast	Kurushima Kaikyō	Plymouth	Vladivostok
Gdansk Bay	Lerwick	Port Esquivel	Vlissingen and app-s
Gibraltar strait	Liepaja	Port Kaiser	Voznesenye
Gijon	Lisbon	Prince William Snd	Vysotsk

شرکت دانش بنیان

دریا پردازشگران سورین طبرستان (سهامی خاص)

تحت حمایت معاونت علمی فناوری ریاست جمهوری
مستقر در پارک علمی فناوری استان مازندران



لیست دوره های قابل برگزاری با شبیه ساز پل فرماندهی

- | | |
|--|--|
| 1. Basic Ship Handling and Maneuvering | 7. AIS |
| 2. Basic Radar/ARPA Training | 8. Officer to Navigational Watch |
| 3. ECDIS | 9. GMDSS Radio Communications |
| 4. VHF Radio Communications | 10. More Advanced Ship Handling and Maneuverings |
| 5. Radar/ARPA | 11. Bridge Team Work |
| 6. NavAids Training | 12. Search and Rescue Operation |

ویژگی ها و توانایی های فنی شبیه ساز

- * برنامه ریزی و انجام یک سناریو با تعیین موقعیت
- * حفظ و نگهداری ناوبری امن با ECDIS,UAIS,SSAS
- * حفظ و نگهداری ناوبری امن با استفاده از RADAR/ARPA
- * پاسخ به اضطرار و شرایط بحرانی
- * پاسخ به سیگنال های منتشر شده در دریا
- * راهبری و مانور شناور
- * برنامه ریزی سفر و هدایت و ناوبری
- * تعیین موقعیت و دقت در تنظیم موقعیت
- * تعیین موقعیت و ایجاد خطا در قطب نما
- * هماهنگی عملیات جستجو و نجات
- * ایجاد تدابیر و دستورالعمل های دیدبانی یا نگهداری
- * حفظ ناوبری امن از طریق استفاده از ARPA و RADAR و سیستم های ناوبری مدرن جهت کمک به تصمیم گیری در فرمان
- * مانور و هدایت کشتی در هر شرایط
- * کنترل از راه دور نیروها و سیستم های مهندسی و خدمات

Coming Soon...

Engine Room Simulator TITAN-E

TITAN-E AVAILABLE SHIP MODELS

TITAN-E incorporates the library of ship models with the most widespread types of propulsion plant. The model library is constantly growing.

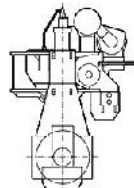
The following Ship Models are available now:

Dry-Cargo Vessel/Container Ship

Model Description

Multipurpose dry-cargo vessel/container ship of 12,000 DWT, carrying general cargo, 20' and 40' containers.

Main engine: two-stroke low-speed reversible turbo charged diesel engine with fixed pitch propeller.



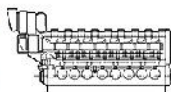
Vessel	
Length o.a.,m	137.40
Breadth mid, m	21.50
Draught at design WL, m	7.50
Deadweight at SLM, t	12,000
Speed in full load, kn	19.1

Main Engine	
Type	MAN B&W6S60MC
Cylinder Bore, mm	600
Piston Stroke, mm	2292
No. of Cylinders	6
MCR, KW	12,240
Corresp. Engine speed, rpm	105
Propeller	FPP
Propeller blades	4

RO-RO Vessel

Model Description

Ro-Ro vessel of 5,000 DWT, with a four-stroke medium-speed non-reversible turbo charged diesel engine and controllable pitch propeller.



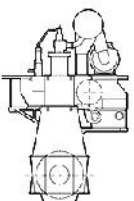
Vessel	
Length o.a.,m	124.09
Breadth mid, m	19.20
Draught at design WL, m	6.30
Deadweight at SLM, t	5,000
Speed in full load, kn	16.6

Main Engine	
Type	S.E.M.T. Pielstick 16 PC2.2 V-400
Cylinder Bore, mm	400
Piston Stroke, mm	460
No. of Cylinders	16
MCR, KW	5,966
Corresp. Engine speed, rpm	520
Propeller	CPP
Propeller blades	4

Container Ship

Model Description

Containership of 83,105 DWT with a two-stroke reversible low-speed turbo charged diesel with fixed pitch propeller.



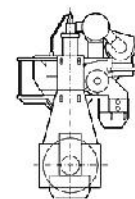
Vessel	
Length o.a.,m	277.40
Breadth mid, m	40.0
Draught at design WL, m	13.3
Deadweight at SLM, t	83,105
Speed in full load, kn	24.9

Main Engine	
Type	MAN B&W 10K98MC
Cylinder Bore, mm	980
Piston Stroke, mm	2660
No. of Cylinders	10
MCR, KW	57,200
Corresp. Engine speed, rpm	94
Propeller	FPP
Propeller blades	4

General Cargo-2

Model Description

Multipurpose general cargo-containership of 12,000 DWT, having a two-stroke reversible low-speed turbo charged diesel, and direct transmission to a fixed pitch propeller.



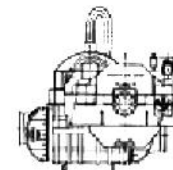
Vessel	
Length o.a.,m	137.40
Breadth mid, m	21.50
Draught at design WL, m	7.50
Deadweight at SLM, t	12,000
Cargo Holds Capacity, m3	14,950
Speed in full load, kn	19,1

Main Engine	
Type	Wartsila-Sulzer RTA58
Cylinder Bore, mm	580
Piston Stroke, mm	2416
No. of Cylinders	6
MCR, KW	12,750
Corresp. Engine speed, rpm	105
Propeller	FPP
MEP, Bar	19
Propeller blades	4

LNG Tanker

Model Description

LNG tanker of 76,000 DWT, with a steam turbine as the main engine, driving a fixed pitch propeller via a turning gearbox.



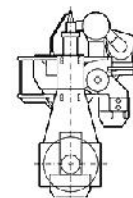
Vessel	
Length o.a.,m	276.0
Breadth mid, m	43.40
Draught at design WL, m	11.01
Deadweight at SLM, t	76,134
Cargo Tanks Capacity, m3	137,585
Speed in full load, kn	19,5

Main Engine	
Type	Kawasaki UA-400
Output MCR, kw	29,450
Output MCR, kw	25,040 / 85,3 R.P.M.
Steam Conditions at inlet	57,4 bar , 515 oC
Condenser vacuum at top	722 mmHg Vac. at MCR
Superhead steam	61,5 bar/515 oC/63,500kg/h at MCR
Propeller	FPP

Oil Tanker

Model Description

Oil tanker of 60,500 DWT, with a two-stroke low-speed reversible turbo charged diesel engine and fixed pitch propeller. The Auxiliary systems: Oily Water Treatment System & Incinerator added according to MARPOL requirements.



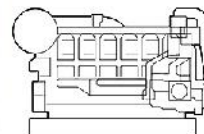
Vessel	
Length o.a.,m	242.8
Breadth mid, m	32.2
Draught at design WL, m	12.50
Deadweight at SLM, t	67,980
Speed in full load, kn	13,6

Main Engine	
Type	MAN B&W 6S60MC
Cylinder Bore, mm	600
Piston Stroke, mm	2,292
No. of Cylinders	6
MCR, KW	12,240
Corresp. Engine speed, rpm	105
Propeller	FPP
Propeller blades	4

Fishing Vessel

Model Description

Trawler with a four-stroke high-speed turbo charged diesel engine, reversible reduction gear and fixed pitch propeller.



Vessel	
Length o.a.,m	24.5
Breadth mid, m	6.31
Draught at design WL, m	3.25
Deadweight at SLM, t	250
Speed in full load, kn	11

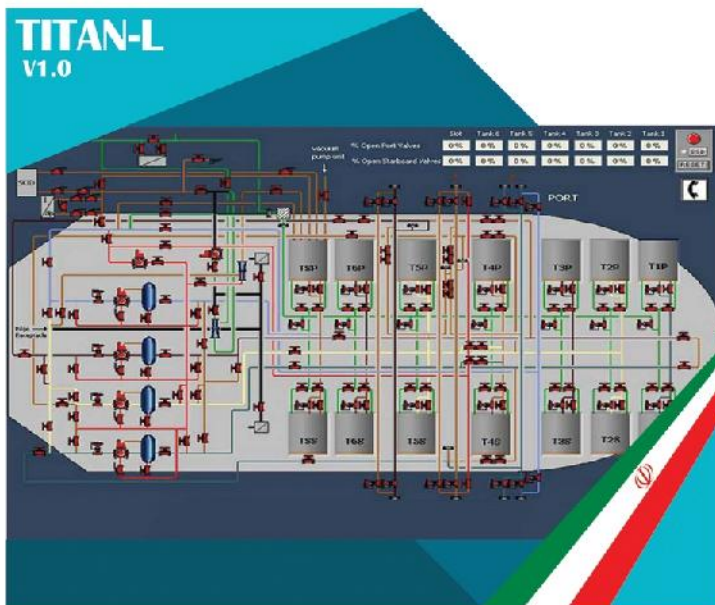
Main Engine	
Type	CATERPILLAR 3508 TA
Cylinder Bore, mm	170
Piston Stroke, mm	190
No. of Cylinders	8
MCR, KW	526
Corresp. Engine speed, rpm	1,200
Propeller	FPP
Propeller blades	4



TUG BOAT Simulator



FISHING Simulator



Liquid Cargo Handling Simulator



Integrate Engine Room Simulator