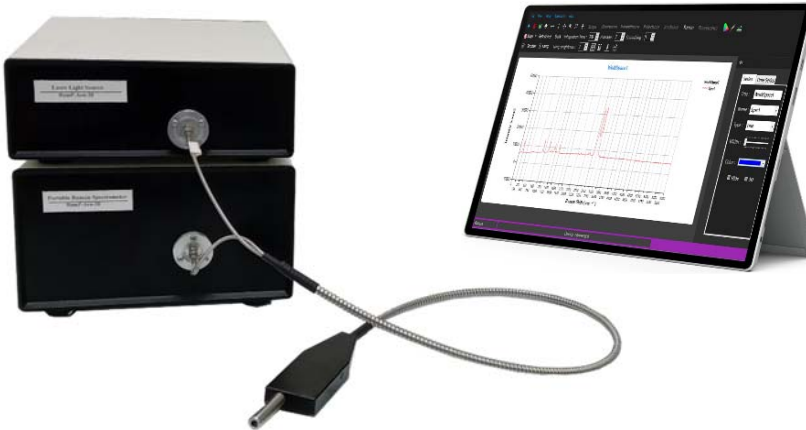


Portable Raman Spectrometer

- ❖ Array Spectrometer
- ❖ Laser Light Source
- ❖ Raman Probe



- Simultaneous obtained of all spectra
- Time Monitoring of spectra
- Integration time controlling using software
- Mathematical processing (Averaging, Sum, Smooth ...)

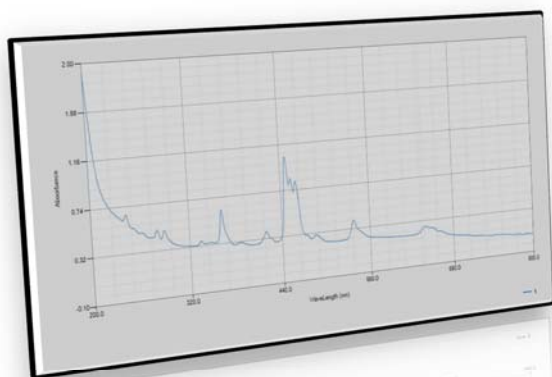
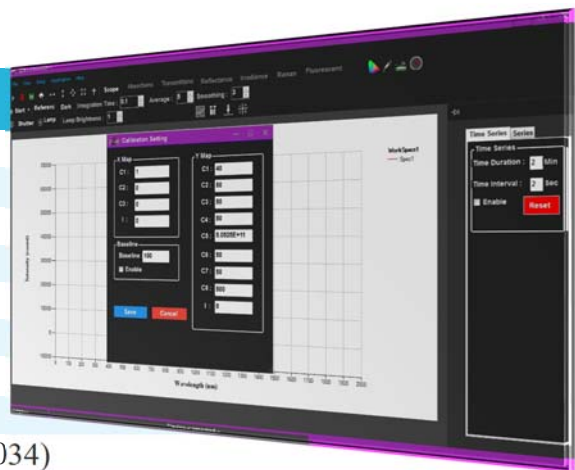
Raman Spectrometer

RamP-Arn-25

Specifications:

Optical Specifications

| | |
|----------------------------|--|
| Wavelength Range | 150-4500 cm^{-1} |
| Resolution | < +20.0 cm^{-1} |
| Scan Time | 2-1000 ms |
| Typical Scan Time | 0.1 s |
| Stray Light | < 0.03 % |
| Wavelength Accuracy | < ± 0.1 nm |
| Photometric Stability | < 0.01 A/min at 0 A , 500 nm |
| Photometric Noise | < 0.01 A 80 scan at 0 A, 500 nm |
| Wavelength Reproducibility | < ± 0.02 nm for 10 scans (NIST 2034) |
| Photometric Accuracy | < ± 0.01 A at 440.0 465.0 590.0 635.0 nm (NIST 930e) |
| Baseline Flatness | < 0.01 A 0.5 second blank, 0.5 second scan at 0 A , 500 nm |
| Light Source | Laser 532 nm 300 mW |
| Laser Stability | < 1 % rms over 4 hours |
| Laser Lifetime | 10000 Hours |
| Detector | 2000 Multichannel |



Physical Specifications

| | |
|---------------|----------------------|
| Communication | USB2 |
| Windows | 7 , 8 , 10 |
| Software | Spectroscopy Station |
| Weight | 6 Kg |
| HxWxD | 22x22x28 cm |
| Power | 220V AC 50/60 Hz |

Applications:

